

# The State of the State of North Dakota:

Indicators of Economic, Age, Social, Health, Education, and Workforce



Verlin B. Hinsz, Ph.D.  
Center for Social Research, NDSU

Building an Inclusive Economy in North Dakota – 11/7/13  
Northwest Area Foundation Convening -- Bismarck




## NDCOMPASS

a project of the Center for Social Research at North Dakota State University ([www.ndsu.edu/csr](http://www.ndsu.edu/csr))

NDCompass is a 1-stop social indicators website in North Dakota with tools to help access and interpret data ([www.ndcompass.org](http://www.ndcompass.org))

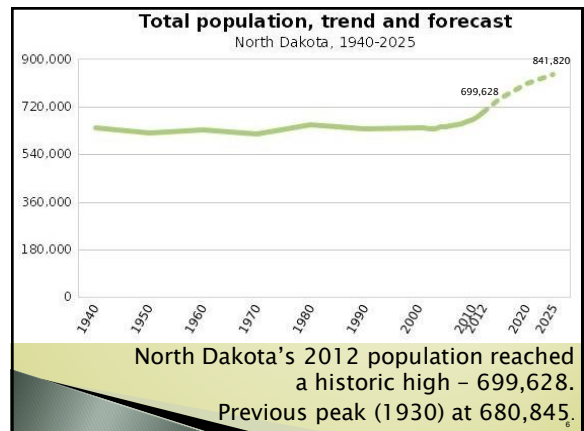
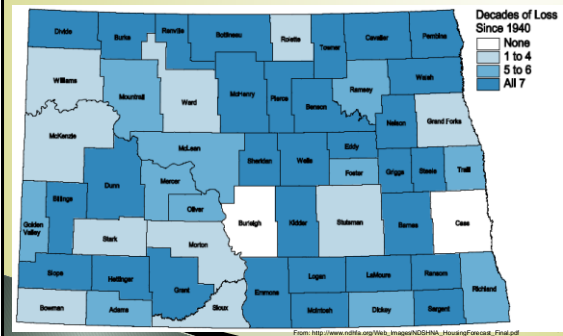
## Focus on Indicators relating to:

- Population
- Aging population
- Housing
- Working parents
- Child care and Education
- Health



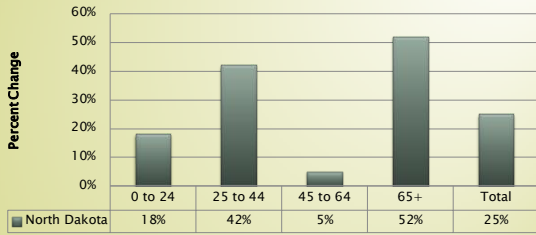
## Population

All but 2 counties had population decline in at least one decade since 1940;  
30 counties had declines in all 7 decades



## Population Projections

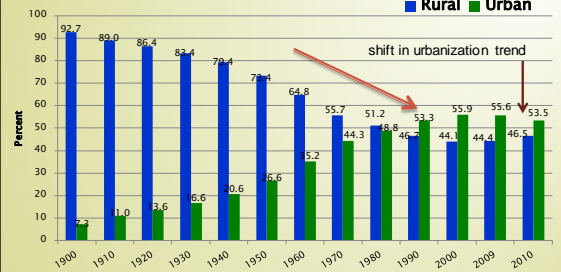
Percent Change in Population by Age, 2010 to 2025



Increases in most age groups (largely due to energy boom) reducing the "graying of ND" that once seemed inevitable

Source: [http://www.ndhfa.org/Web\\_Images/NDISHNA\\_HousingForecast\\_Final.pdf](http://www.ndhfa.org/Web_Images/NDISHNA_HousingForecast_Final.pdf)

## North Dakota Rural-Urban Population Distribution 1900 to 2010

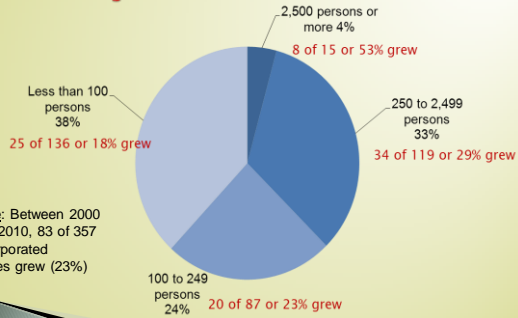


More North Dakotans lived in urban areas (2,500+) by 1990. 223 (62%) of ND's 357 incorporated places are smaller than 250 people.

8

## City Size in North Dakota: 2010

% change 2000 to 2010 noted in Red



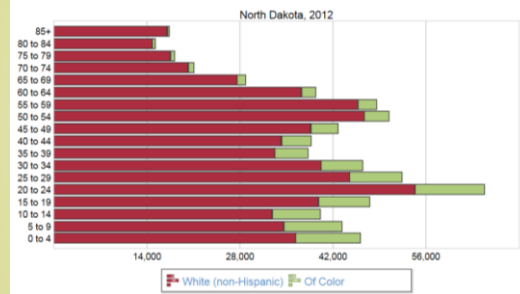
Note: Between 2000 and 2010, 83 of 357 incorporated places grew (23%)

Note: Based on 357 incorporated cities  
Source: U.S. Census Bureau, Census 2010

9

## Population Diversity

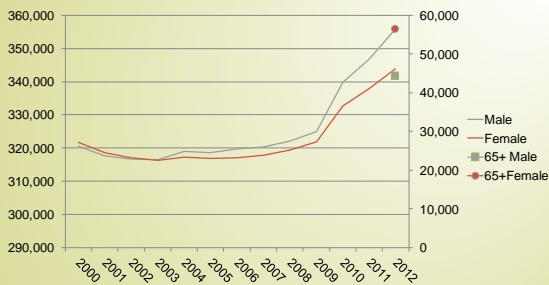
Population by age and race



Diversity is increasing, with a greater proportion of residents Of Color in the younger age groups

10

## Gender Distribution: Total and by 65+



Source: U.S. Census Bureau, Population Division

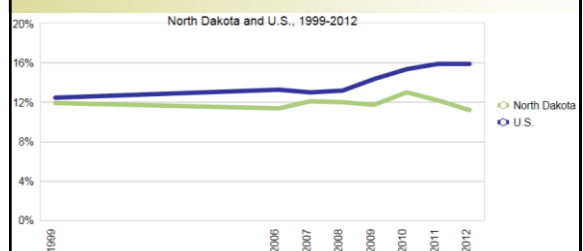
Among older adults in North Dakota, there were 77 men for every 100 women.\*

Center for Social Research at NDSU  
\*North Dakota's Aging Population

<http://www.ndcompass.org/aging/library.php?libitemID=1163&UhojID9H2k4>

11

## Individuals Below the Poverty Level



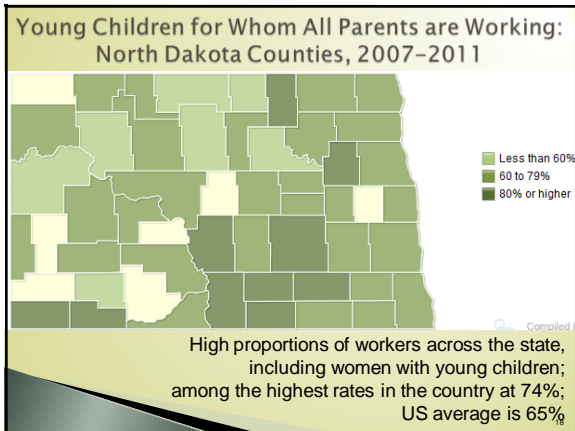
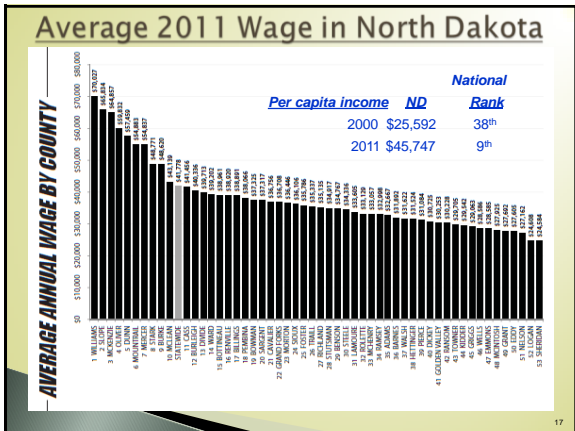
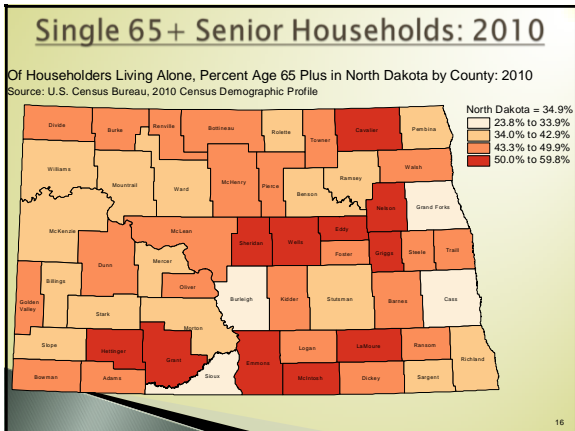
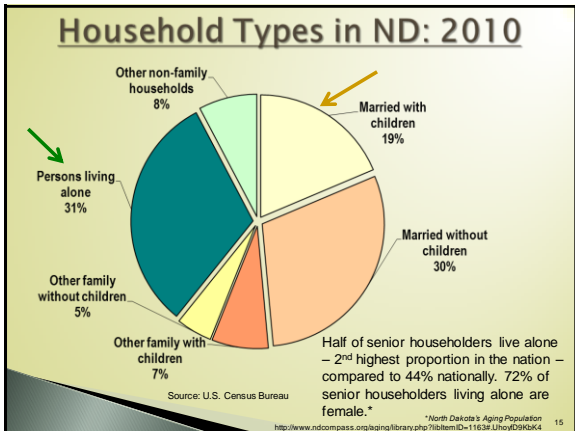
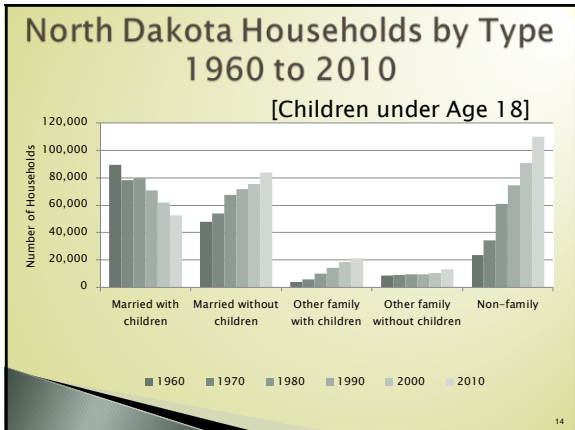
A consistent rate of poverty in North Dakota, although consistently below national averages; 2012 = 11.2%.

The Census Bureau uses a set of dollar value thresholds that vary by family size and composition to determine who is in poverty. In July 2012, the federal poverty threshold was about \$23,068 for a family consisting of two adults and two minor children.

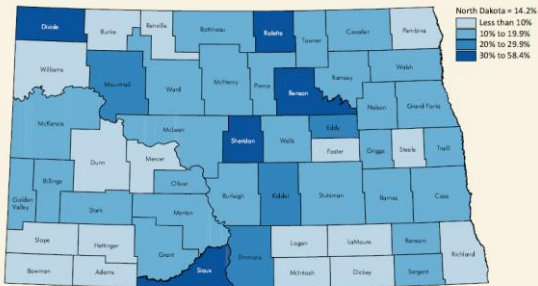
12

Measuring progress, inspiring action

# Households And Families

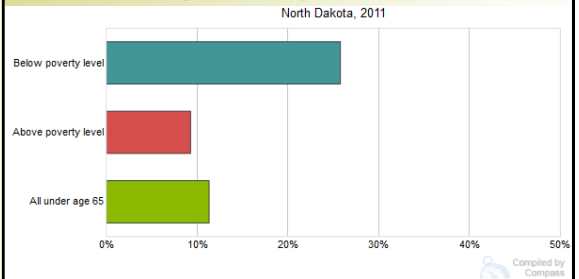


### Children Ages 0-17 Living in Poverty in North Dakota: 2010



Source: U.S. Census Bureau, 2006-2010 American Community Survey 5-Year Estimates, B17001

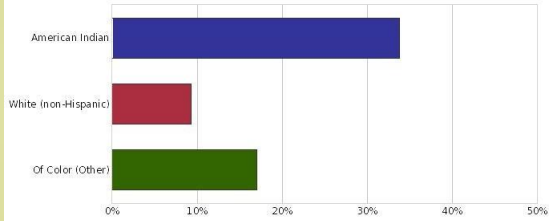
### Uninsured by Poverty Status (Under 65)



Rate is ~3X higher for those below poverty level than those above it (26% vs. 9%)

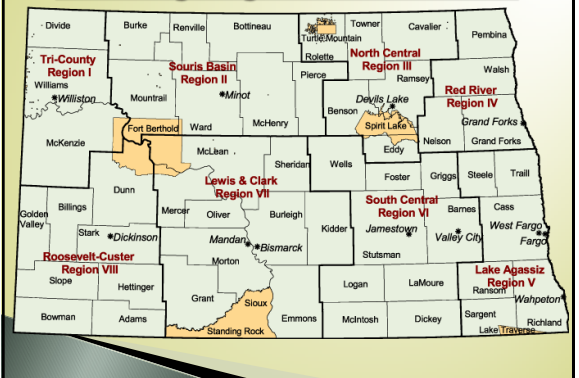
### Uninsured by Race (Under 65)

Residents under 65 without health insurance by race  
North Dakota, 2009-2011



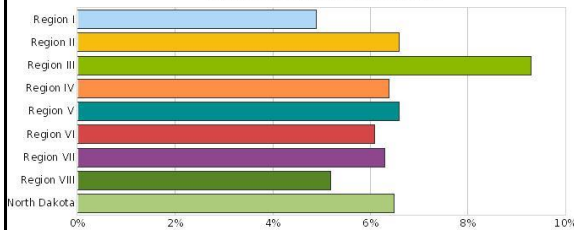
Rate more than 3 times higher for American Indians than Whites (34% vs. 9%)

### Planning Regions of the State



### Babies Born at Low Birth Weight

Babies born at low birth weight (all births)  
By planning region, North Dakota, 2011



9.3% in Region 3, 4.9% in Region 1, 6.5% of all births statewide;

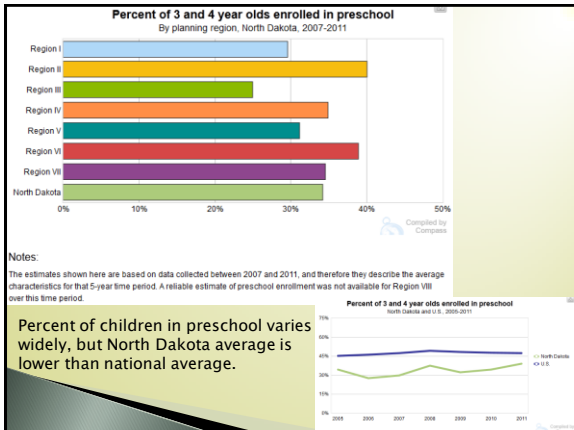
### Overall National KIDS COUNT Ranking

In 2013, North Dakota ranked 6<sup>th</sup> in the nation for overall child well-being

- Economic well-being - #1
- Education - #16
- Health - #25
- Family and community - #4



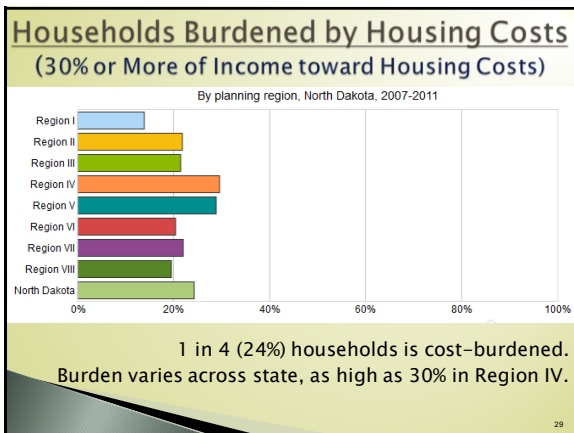
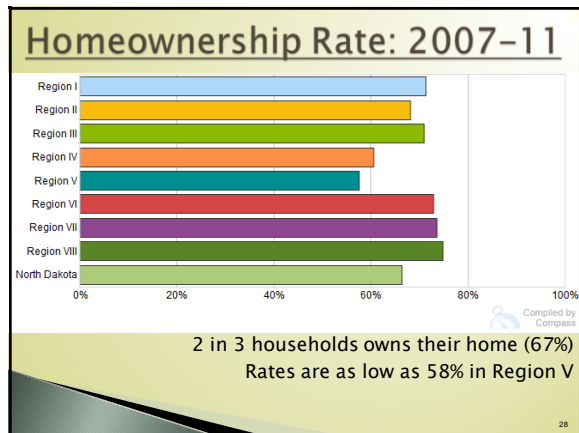
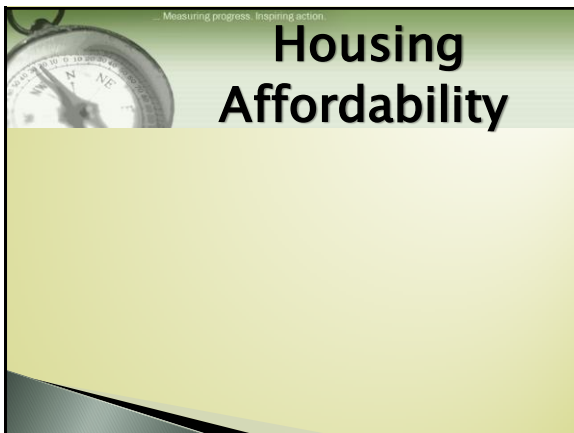
<http://datacenter.kidscount.org/~media/136/ND2013DataBookNewsRelease.pdf>



### Annual Cost of Licensed Child Care

Age of Child	Family and Group		Center	
	Average	Highest Rate	Average	Highest Rate
Ages 0 to 17 months	\$6,455	\$16,380	\$8,066	\$15,093
18 to 35 months	\$6,285	\$14,040	\$7,705	\$14,625
Ages 3 to 5	\$6,158	\$11,700	\$7,158	\$13,923

Average annual cost of sending an infant to a center-based licensed child care facility in North Dakota in 2012 = \$8,066.  
Regional differences exist with average costs in Cass County=\$8923.



### North Dakota Annual Income Level Category and Housing Affordability, 2010

Characteristic	Income Categories Based on Income as a Percentage of the Median Family Income (MFI) FY 2010									
	(FY 2010 MFI=\$61,500 in North Dakota)									
	Extremely low: 0% to 30% MFI		Very Low: 31% to 50% MFI		Low Income: 51% to 80% MFI		Moderate: 81% to 115% MFI		Upper: Above 115% MFI	
	From:	To:	From:	To:	From:	To:	From:	To:	From:	To:
Annual Income Ranges (\$)	50	\$18,450	\$18,451	\$30,750	\$30,751	\$49,200	\$49,201	\$70,725	\$70,726	\$70,726
Monthly Affordable Housing Costs (\$)	50	\$461	\$462	\$769	\$770	\$1,230	\$1,231	\$1,768	and above	\$1,769
Affordable Purchase Price (\$)	\$37,741		\$62,845		\$100,665		\$144,923		\$174,814	\$75,738
% of Owner-Occupied Housing Units That Are Affordable	16.2%		28.9%		56.6%		67.3%		77.5%	
% of Renter-Occupied Housing Units That Are Affordable	35.2%		75.4%		87.7%		90.1%		90.1%	

Sources: U.S. Department of Housing and Urban Development and the Center for Social Research at NDSU

43% in 2004, 69% in 2004, 96% in 2004, 83% in 2004, 91% in 2004, 86% in 2004



## Elderly Householders Burdened by Housing Costs (30% or More of Income toward Housing Costs) 2000 and 2010

	2000		2010	
	Owner-Occupied Households	Renter-Occupied Households	Owner-Occupied Households	Renter-Occupied Households
All householders 65 and older	32,980	16,124	44,819	16,449
Cost-burdened	5,087	6,129	9,713	8,080
Percent	15.4%	38.0%	21.7%	49.1%

Source: U.S. Census Bureau

41% increase (from 15.4% to 21.7%)  
29% increase (from 38.0% to 49.1%)

31



NORTH DAKOTA  
**COMPASS**

Measuring progress.  
Inspiring action.

Website: [www.ndcompass.org](http://www.ndcompass.org)  
Facebook: /NDCompass  
Twitter: @NDCompass

**Verlin B. Hinsz, Ph.D.**

Director  
Center for Social Research  
[www.ndsu.edu/csr/](http://www.ndsu.edu/csr/)  
701-231-8621  
[Verlin.Hinsz@NDSU.edu](mailto:Verlin.Hinsz@NDSU.edu)

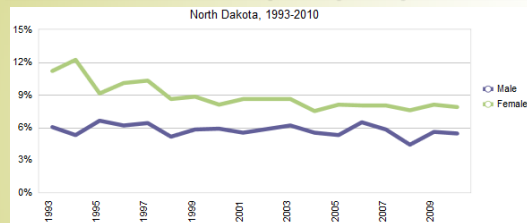
**NDSU** NORTH DAKOTA  
STATE UNIVERSITY

**North Dakota KIDSCOUNT**

[www.ndkidscount.org/](http://www.ndkidscount.org/)



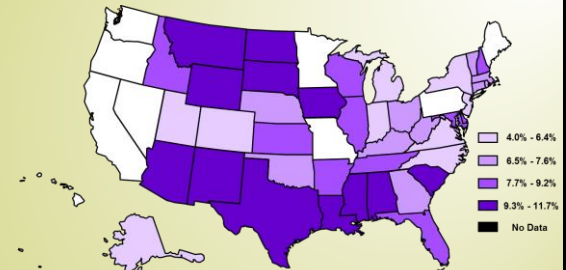
## Mental Unhealthy Days by Gender



Average of 2.4 mentally unhealthy days per month in ND. There are important differences by gender, yet on average, 6.6% of North Dakotans (age 14+) experienced mentally unhealthy days at least half the month.

33

## High School Students Who Drove a Car/Vehicle When They Had Been Drinking Alcohol,\* 2011



\* One or more times during the 30 days before the survey.

34

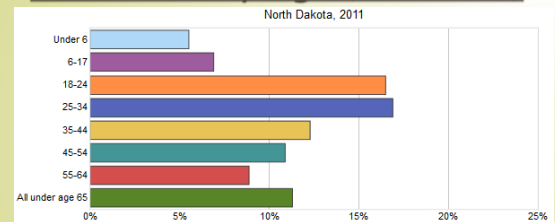
## Long-Term Care Facilities

- In 2010, about 6% of ND older adults lived in skilled nursing facilities.\*
  - The majority of these residents are 85+.
  - Two-thirds of nursing home residents are female.
- In 2009, ~10% of ND older adults had at least one nursing home stay.\*
  - 30% of residents 85+ had at least one stay.

\*North Dakota's Aging Population  
<http://www.ndcompass.org/aging/library.php?libItemID=1163&libItemID996K4>

35

## Uninsured by Age (Under 65)



Highest rates of uninsured (~17%) are among 18-34 compared to 11% for all under 65.

Most all ND seniors (97%) have health-care coverage because most are eligible for Medicare.\*

\*North Dakota's Aging Population  
<http://www.ndcompass.org/aging/library.php?libItemID=1163&libItemID996K4>

36

